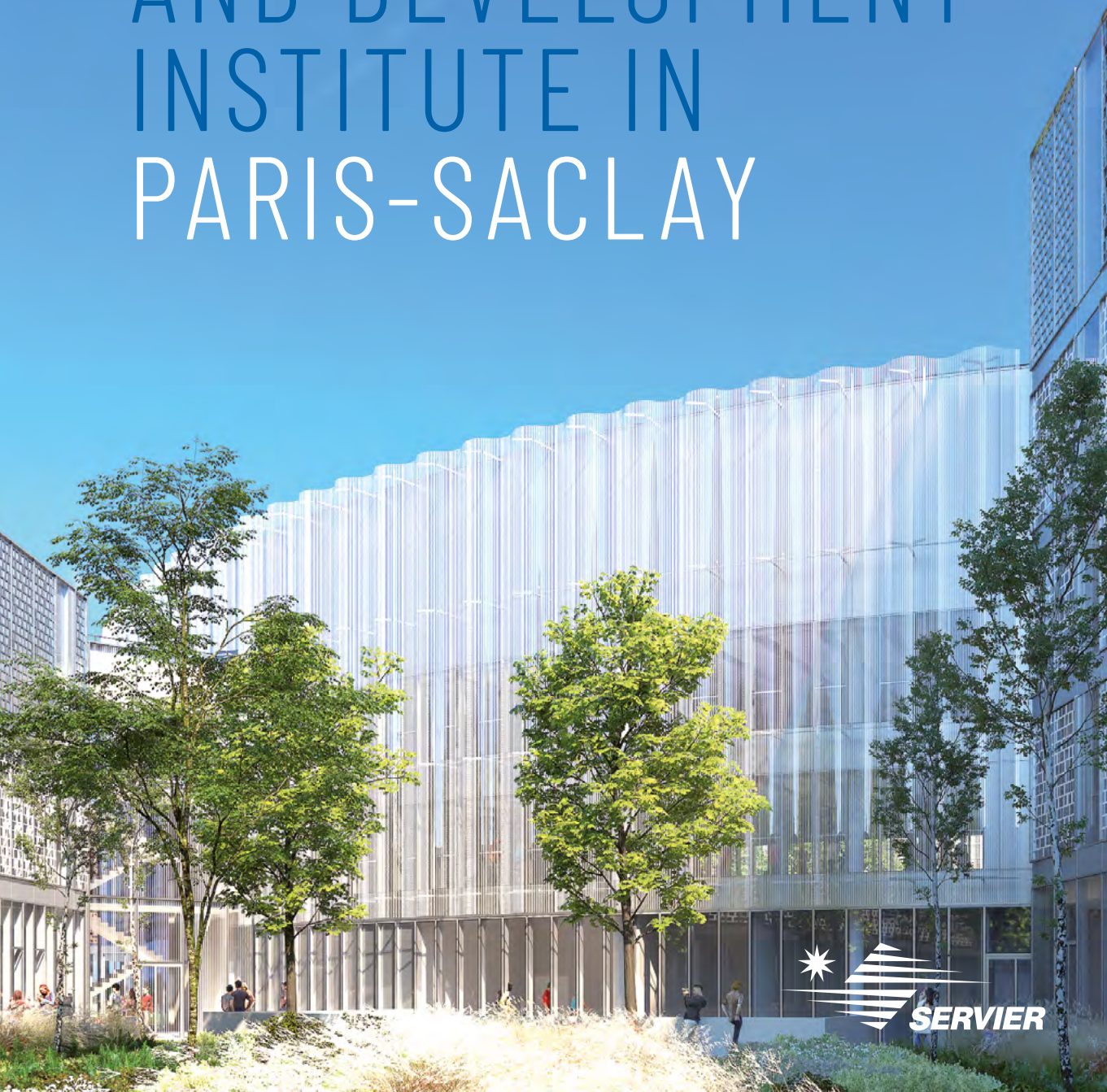


ACCELERATING RESEARCH TODAY TO REINVENT  
THE HEALTH OF TOMORROW

# SERVIER RESEARCH AND DEVELOPMENT INSTITUTE IN PARIS-SACLAY





DR CLAUDE BERTRAND  
EXECUTIVE VICE PRESIDENT RESEARCH AND DEVELOPMENT

"OUR NEW SERVIER RESEARCH AND DEVELOPMENT INSTITUTE, CURRENTLY UNDER CONSTRUCTION AT THE PARIS-SACLAY HUB FOR SCIENTIFIC AND TECHNOLOGICAL INNOVATION, STRIVES FOR INNOVATION AND EXCELLENCE.

THIS UNIQUE HUB FOR RESEARCH AND DEVELOPMENT WILL INSPIRE SERVIER'S AMBITION TO PROVIDE CUTTING-EDGE THERAPEUTIC INNOVATIONS TO PATIENTS, REFLECTING OUR DETERMINATION TO RAISE THE PROFILE OF FRENCH RESEARCH INTERNATIONALLY.

WE ARE THEREFORE COMMITTING TO A FUTURE-FACING PROJECT THAT WILL DRIVE THE GROUP'S FOUNDATION, LONG-TERM RESEARCH AND THE PURSUIT OF OUR VOCATION — COMMITTED TO THERAPEUTIC PROGRESS TO SERVE PATIENT NEEDS."

## AN INDEPENDENT GLOBAL PHARMACEUTICAL GROUP

---

**34<sup>th</sup>**

largest pharmaceutical group  
worldwide, 2<sup>nd</sup> in France,  
and 4<sup>th</sup> leading pharmaceutical  
group in cardiology globally

IQVIA, Analytics Link/World 74 countries –  
MAT Q3-2021

---

**€4.7 BN**

in Group revenue  
in 2020/2021

---

**>20%**

of revenue from brand-name  
medicines invested in R&D  
each year

---

**98%**

of active ingredients used  
in Servier brand-name medicines  
are produced in France

---

**>150**

countries where Servier Group  
medicines are distributed

---

**21,800**

employees worldwide

---









SERVIER RESEARCH AND DEVELOPMENT INSTITUTE

# SACLAY, A CUTTING-EDGE ENVIRONMENT FOR INNOVATION

# A UNIQUE HUB FOR CROSS-DISCIPLINARY INNOVATION

## **H**arnessing Servier's pioneering spirit to drive innovation

With the Servier Research and Development Institute in Paris-Saclay, the Group has taken a new step in its journey to more open, dynamic, and productive research in order to more effectively meet patients' unmet therapeutic needs. In 2023, up to 1,500 employees will work together onsite to reinvent health care tomorrow.

### **The Paris-Saclay Cluster, a unique hub for research**

Ranked one of the eight clusters for innovation worldwide, along with Silicon Valley, Beijing, and Silicon Wadi in Israel, Paris-Saclay has top-tier international influence. The site is home to key names in research as well as international companies, start-ups, and renowned universities such as CentraleSupélec, the École Polytechnique graduate school, the ENS Paris-Saclay graduate school, and Paris-Saclay University —the first French university included in the prestigious Shanghai ranking— coming 13<sup>th</sup> in 2021.

### **Fostering synergy**

Paris-Saclay is the ideal location for establishing new partnerships, representing 15% of French research by number of researchers and 40% of employment in public and private research in the Greater Paris region. By bringing together research and development activities in one place, Servier intends to help its employees develop in a high-level environment, where they will benefit from the skills and expertise of other professionals. The Group has reached out to a number of local institutions such as CNRS, CEA, Paris-Saclay University, and the École Polytechnique graduate school. Riding the momentum underway at Paris-Saclay, Servier is also participating in the organization of a number of events including Paris-Saclay Spring, Orange Campus, TEDxSaclay, the Île de Sciences competition, and the Paris-Saclay University symposium. —



## PARIS-SACLAY IN FIGURES

---

**15,000**

researchers

---

**15%**

of French research

---

**65,000**

students

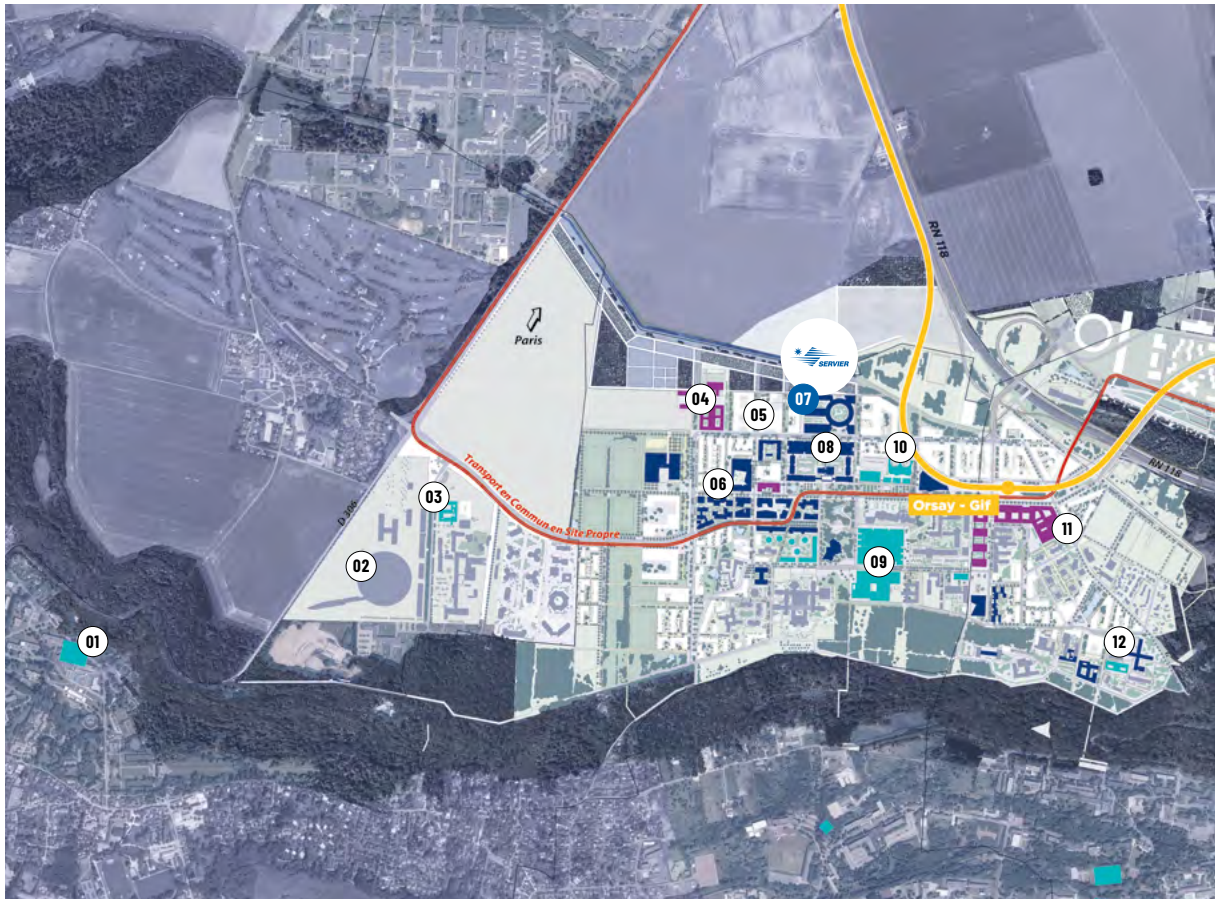
---

Paris-Saclay,

**13<sup>th</sup>**

in the Shanghai world university  
rankings (2021)

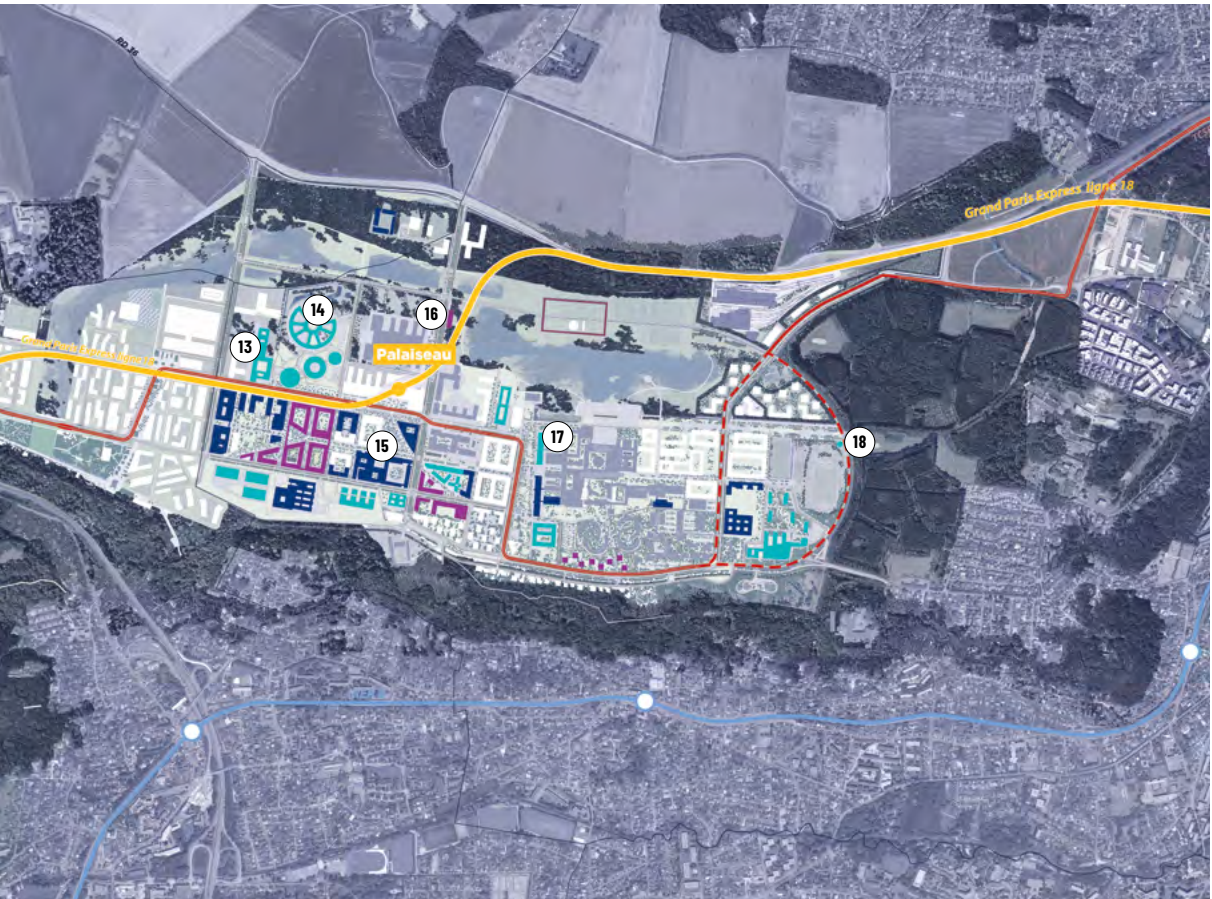
# THE PARIS-SACLAY CLUSTER



## THE MOULON DISTRICT

- |  |  |  |
|--|--|--|
| 01 THE FRENCH NATIONAL CENTER FOR SCIENTIFIC RESEARCH (CNRS) - INSTITUTE FOR INTEGRATIVE BIOLOGY OF THE CELL         | 04 PARIS-SUD UNIVERSITY - INSTITUTE FOR THE DIVERSITY, ECOLOGY AND EVOLUTION OF THE LIVING WORLD (IDEEV) | 08 ENS PARIS-SACLAY GRADUATE SCHOOL                              |
| 02 SYNCHROTRON SOLEIL  | 05 DANONE  | 09 CENTRALESUPÉLEC GRADUATE SCHOOL                               |
| 03 INSTALLATION FOR THE CLIMATE AND THE ENVIRONMENT (FRENCH ALTERNATIVE ENERGIES AND ATOMIC ENERGY COMMISSION - CEA) | 06 HOUSING, STORES, SERVICES, PUBLIC AMENITIES   | 10 PARIS-SUD UNIVERSITY IT RESEARCH HUB                          |
|  | 07 <b>SERVIER RESEARCH AND DEVELOPMENT INSTITUTE PARIS-SACLAY</b>  | 11 PARIS-SUD UNIVERSITY - BIOLOGY, CHEMISTRY AND PHARMACY CENTER |
|  |  | 12 THE ORSAY MOLECULAR SCIENCE INSTITUTE (ISMO)                  |

SERVIER RESEARCH AND DEVELOPMENT INSTITUTE



### THE ÉCOLE POLYTECHIQUE DISTRICT

13 EDF CAMPUS

14 EDF R&D LAB

15 INSTITUT MINES-TÉLÉCOM (IMT)  
GRADUATE SCHOOL

16 SUB-PREFECTURE

17 ÉCOLE POLYTECHIQUE SCIENCE  
& TECH GRADUATE SCHOOL LAB

18 CIVIL AVIATION RADAR

 BUILDINGS DELIVERED

 CONSULTATION PROCESS  
COMPLETED

 CONSULTATION PROCESS UNDERWAY





SERVIER RESEARCH AND DEVELOPMENT INSTITUTE





The Servier Research  
and Development Institute in Paris-Saclay,  
a hub for innovation

PARIS-SACLAY



SERVIER RESEARCH AND DEVELOPMENT INSTITUTE

HELPING  
START-UPS STEP UP  
INNOVATION  
IN HEALTH CARE

# INCUBATING THE START-UPS DRIVING THERAPEUTIC INNOVATION

**T**he start-up incubator at the Servier Research and Development Institute is the sole initiative of its kind in France, and represents the Group's ambition to renew itself and its approach to R&D.

## Synergies fostering therapeutic innovation

Breaking down barriers to network innovation is key to meeting the unmet needs of patients more effectively and efficiently. Servier therefore designed this incubator as a space to share know-how and expertise for the development of health and medicine related projects. The Group will leverage its internal network to share its scientific and technological expertise with start-ups, harnessing a network of partners to provide support regarding legal, accounting, and administrative issues. This new synergy between the momentum of new, future-facing companies and Servier's pharmaceutical knowledge will therefore create unique conditions that will showcase and accelerate therapeutic research.

## Using tailor-made spaces

Spanning 1,850 m<sup>2</sup>, the incubator will house various types of workstations—featuring laboratories with state-of-the-art equipment alongside offices specially designed to facilitate discussion, as well as reception and catering areas. Servier has entrusted the management to BioLabs, a world renowned US-based incubator operator. BioLabs will oversee the day-to-day management at the facility, supply equipment, provide services, offer practical support, and organize events and programs specially designed for start-ups operating in the life sciences industry.

## Specific guidance for growing start-ups

The incubator has been designed with capacity for up to 110 people—i.e., around 15 start-ups, changing every three years on average. Start-ups that respond to the call for tender will be chosen by a committee made up of representatives from Servier, as well as qualified external participants. To join the incubator, the start-ups must already possess a certain level of maturity and present a proven and promising concept that aligns with Servier's business, as well as a clear vision of what they need to go further. —



## THE INCUBATOR IN FIGURES

---

Spring  
**2023**  
inauguration

---

---

**110**  
PERSON  
capacity

---

**1,850 M<sup>2</sup>**  
across four floors

---

**2022**  
first call for tender

---



SERVIER RESEARCH AND DEVELOPMENT INSTITUTE





A building focused on innovation,  
kitted out with cutting-edge scientific and  
IT equipment

PARIS-SACLAY





# ENCOURAGING COLLABORATION AND AGILITY

## FOSTERING AN ENVIRONMENT CONDUCTIVE TO INNOVATION

**F**eaturing innovative architecture and cutting-edge technological capabilities, the Servier Research and Development Institute in Paris-Saclay has been designed to foster new methods of work and management that facilitate synergy and teamwork.

### **A departmental structure**

The building's architecture was created to encourage new working methods by making it easier to disseminate best practices, bring together scientific and technical teams, develop partnerships, and share expertise. Architects Wilmotte & Associés designed the building around a central ring, with all scientific activities taking place in the departments located in the wings. This cross-disciplinary structure will enhance communication and has been planned to step up R&D programs while fostering harmonious collaboration in and between teams, benefiting scientific progress and therapeutic innovation.

### **Fully digital and technological facilities**

Successfully integrating digital technologies is key to boosting agility, performance, and productivity. Com-

binning the most advanced data processing technology with the Group's expertise will enable an acceleration of the iterative molecule identification procedure. What's more, as the cornerstone of the R&D process at the Servier Research and Development Institute at Paris-Saclay, the new cloud computing environments, high performance computing centers, and powerful analysis tools will enhance Group innovation, fostering future therapeutic success stories.

### **Flexible spaces**

All work spaces were designed with teams upstream. The Research and Development Institute is much more than a building—it illustrates a new way of thinking about how we work. Employees can therefore move freely between individual spaces for high-level concentration and the collective areas for open discussions. They can also enjoy the various relaxation areas located both inside and outside, in the green spaces. This stimulating working environment will help unlock the full potential of research while improving employee well-being. —

## THE SERVIER RESEARCH AND DEVELOPMENT INSTITUTE IN FIGURES

A floorplan spanning

**45,000 M<sup>2</sup>**

Up to

**1,500**

employee capacity

**1 PROJECT**

awarded to architectural firm  
Wilmotte & Associés

**5,000 M<sup>2</sup>**

of ground floor green spaces



SERVIER RESEARCH AND DEVELOPMENT INSTITUTE





↑  
A building designed to facilitate  
meetings and discussion

PARIS-SACLAY





SERVIER RESEARCH AND DEVELOPMENT INSTITUTE

# COMBINING WELL-BEING AT WORK AND ENVIRONMENTAL PROTECTION



# TAKING ACTION TO PROTECT THE ENVIRONMENT AND EVERYONE ONSITE

In line with its corporate social responsibility (CSR) strategy, Servier is striving to make sure that the Research and Development Institute real estate project underway at Paris-Saclay applies its approach of generating a positive impact for employees, the environment, and stakeholders. The awarding of multiple certifications has proven the extent of this commitment.

## High Environmental Quality (HQE) certification

The High Environmental Quality (HQE) certification recognizes and highlights buildings with optimal environmental and energy performance from the design stage. This approach is part of a constant improvement process to encourage people to reduce buildings' energy usage and environmental impact while protecting the health, well-being, and comfort of users.

## WELL Building Standard® certification

At the Servier Research and Development Institute in Paris-Saclay, the immediate environment for users is a key consideration in order to ensure their quality of life at work, which is a key priority for the Group. The WELL Building Standard® certification, awarded by

the International WELL Building Institute (IWBI), focuses on people's health and well-being. At the Servier Research and Development Institute, a number of facilities will be made available to employees to encourage them to eat a healthy and balanced diet, exercise regularly, and improve their work/life balance.

## BiodiverCity® label

To encourage everyone to protect and showcase urban biodiversity, Servier is also aiming for the international BiodiverCity® label. This new assessment attests a certain level of excellence when it comes to ecology and sustainable construction. The Servier Research and Development Institute in Paris-Saclay will therefore include grounds spanning almost 5,000 m<sup>2</sup>, 9,000 m<sup>2</sup> of green roofs and over 70 plant species. There will also be 100 m<sup>2</sup> of community gardens and specific habitats, such as nesting boxes for local fauna identified through an ecological study. These spaces will also give site users the opportunity to discover local plant and animal species. —

## THE SITE'S GREEN AMBITIONS IN FIGURES

---

**5,000 M<sup>2</sup>**  
of grounds

---

---

**>70**  
plant species

---

---

**9,000 M<sup>2</sup>**  
of green roofs

---

---

**100 M<sup>2</sup>**  
of community gardens

---



SERVIER RESEARCH AND DEVELOPMENT INSTITUTE





Green spaces improve well-being  
for people onsite

PARIS-SACLAY

SERVIER - FEBRUARY 2022  
HEADQUARTERS: 50, RUE CARNOT - 92284 SURESNES CEDEX  
FRANCE  
TEL.: 01 55 72 60 00  
SERVIER.COM

DESIGNED AND PRODUCED BY:  
PELHAM MEDIA/STUDIO L'ÉCLAIREUR  
TRANSLATED BY ALTO INTERNATIONAL

PHOTO CREDITS:  
WILMOTTE & ASSOCIÉS/EPA PARIS-SACLAY/FRANCK JUERY

