

Partnering with

SERVIER

2025





Servier is entering a phase of programmatic deal-making



Expand our oncology pipeline by licensing late-stage assets in hemato-oncology and solid tumors targeting high unmet medical needs in well-defined patient populations



Unlock the value of our assets through partnering deals such as combination trials, co-development, out-licensing, co-financing, spin-offs...



Enrich our pipeline in selected oncology and neurology disease areas with a focus on external assets at preclinical and early clinical stages



Strengthen our R&D capabilities with innovative technologies through flexible deal structures

Business Development will be a key enabler of our 2030 ambitions





Oncology

In Licensing

Deal types

Global rights as a priority or Regional (EU or USA followed by China or Japan)

Discovery & Early-Stage Clinical Focus

Cancer cell targeting

- Synthetic lethality
- Apoptosis
- Precision oncology
 - Biomarker-defined populations

Immuno-oncology

- Tumor immune micro-environment
 - T-cell targeting

Late-stage Clinical Focus

- Hematologic tumors (**ALL, AML, MDS**)
- Solid tumors (**GI & CNS** as a priority)

Modalities

- Small molecules and biologics (mAbs, bispecifics, ADCs)

Out Licensing

- Global or Regional
- Co-Development, Research Collaborations

Global BD



Anne Dagallier
Global Head of Licensing -
Oncology
anne.dagallier@servier.com



Valérie Agrapart, PharmD
Director, Business Development
Oncology
valerie.agrapart@servier.com



Alix Scholer-Dahirel, PharmD
Director, Business Development -
Oncology
alix.scholer-dahirel@servier.com



Jérôme Roussel, PharmD
Director, Business Development Oncology &
Diagnostics
jerome.roussel@servier.com

R&D Search & Evaluation



Irene Blat, PhD
Senior Director, Search & Evaluation,
Oncology
irene.blat@servier.com



Tian Li, PhD
Associate Director, Search & Evaluation,
Asia-Pacific
tian.li@servier.com

Local BD



USA
Pat Fetaya, MBA, MSc
Head, US Business Development
pat.fetaya@servier.com



Asia
Cynthia Wang, MBA, MSc
Director, Business Development Asia-Pacific
cynthia.wang@servier.com

Global BD Coordination



Valérie Coudane
GBD Coordination Officer, Oncology
valerie.coudane@servier.com

Neurology



Any pre-clinical & clinical stage

Indications: Rare neurological disorders

- **Rare movement disorders** exemplified by ataxias, Multiple System Atrophy, Huntington's Disease, Progressive Supranuclear Palsy
- **Neuromuscular disorders** exemplified by Amyotrophic Lateral Sclerosis, Spinal Muscular Atrophy, Myasthenia Gravis, Facioscapulohumeral muscular dystrophy, Duchenne Muscular Dystrophy, Dystrophic Myotony
- **Refractory epilepsies** exemplified by Lennox-Gastaut, Dravet, West, DEEs
- **Generically driven ASD** exemplified by Rett, Fragile X Syndrome, Phelan McDermid, Angelman
- **Leukodystrophies**
- **Peripheral neuropathies** exemplified by Charcot-Marie-Tooth

Modalities and drug delivery

- Small molecules, Oligonucleotides, Antibodies
- Technologies improving brain delivery, biodistribution profile, cellular specificity targeting and BBB crossing after systemic administration (especially for ASO)

Global BD



Jørund Sollid, PhD
Global Lead, Neurology
jorund.sollid@servier.com



David Theron, PharmD
Project Director, Neurology
david.theron@servier.com

R&D Search & Evaluation



Camille Nicoleau, PhD
Director, Search & Evaluation,
Neuroscience
camille.nicoleau@servier.com



Tian Li, PhD
Associate Director, Search &
Evaluation, Asia-Pacific
tian.li@servier.com

Local BD



USA
Pat Fetaya, MBA, MSc
Head, US Business Development
pat.fetaya@servier.com



Asia
Cynthia Wang, MBA, MSc
Director, Business Development Asia-Pacific
cynthia.wang@servier.com

Global BD Coordination



Lara-Maria Matar
GBD Coordination Officer, Neurology
laramaria.matar@servier.com



Indications

- Hypertension
- Heart Failure
- Coronary Artery Diseases
- Dyslipidemia
- Diabetes
- Chronic Venous Insufficiency

Development Stage

- From ongoing phase 3 to Commercial

Deal Type

- Licensing
- Asset Purchase

Geographic Scope

- Europe & Row (excl. USA & Japan)

Global BD



Patrick Lenoir

Global Head of BD - CMVD

patrick.lenoir@servier.com



Flore Dutreil

Director, BD CMVD

flore.dutreil@servier.com

Local BD

Asia



Cynthia Wang, MBA, MSc

Director, Business Development Asia-Pacific

cynthia.wang@servier.com

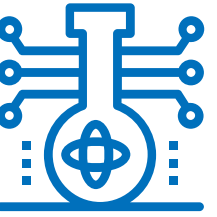
Global BD Coordination



Delphine Duong

GBD Coordination Officer, Research Transactions & CMVD

delphine.duong@servier.com



Therapeutic modalities & technologies

Modality development strategies

Small Molecules

- Kinase, PPI, Receptor modulators; Molecular Glues, Bifunctional molecules, Small molecule targeting RNA for targeted protein degradation/upregulation
- Targeted delivery: prodrugs/polymer drug conjugates/targeted Lipid Nano Particles, Exosomes, Extracellular Vesicles
- Compound Library

Oligonucleotides

- Novel Monomers, Antisense Oligonucleotide (ASO) design technologies, ASO-conjugates and drug delivery systems, targeted saRNA, selective cell ligand targeting for neuronal cell delivery
- Oligo-Manufacturing

Antibodies

- Novel Formats: Ab Fragments, Single Domain Antibodies, Bi-/ Multi-specifics, optimized Fc domains
- Novel technology platform for Antibody Hard-to-Drug targets
- Synthetic antibody libraries
- ADCs linkage Chemistry/ Conditionally active antibody format

R&D Search & Evaluation



Georges Da Violante

Director, Search & Evaluation, Enabling Technologies

georges.da-violante@servier.com



Tian Li, PhD

Associate Director, Search & Evaluation, Asia-Pacific

tian.li@servier.com

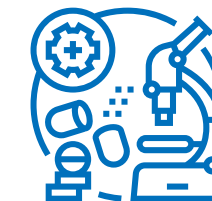
Global BD Coordination



Delphine Duong

GBD Coordination Officer, Research Transactions & CMVD

delphine.duong@servier.com



Drug discoveries & development technologies

Phenotypic cell platforms & 3D models

- iPSCs, patient derived models
- Co-culture models
- Organoids, tumoroids (PDAC, CRC, other solid tumors)
- Organ on a Chip (liver, brain, kidney)

Protein Sciences

- High throughput functional & stability antibody screening
- Antigen specific Immuno-Oncology assays
- Microfluidic or micro array technology B-cell workflow
- Multi-protein production
- High throughput Mass Spectrometry-based proteomic analysis approach
- Mass Spectrometry target

Imaging

- High content imaging (tissues/cells) and analysis
- Multimodal platforms - Multiplexing, Spatial multiOmics Strategy, Spatial Phenotypic quantification
- In vivo visualization of antisense oligonucleotides (ASO) biodistribution
- ASO tolerability assays

Sample Optimization

- Universal sample preparation
- Laser Capture Microdissection
- Single cell analysis ATAC (Assay for Transposase Accessible Chromatin)
- High throughput Mass Spectrometry-based proteomic analysis approach

Liquid Biopsies

- Circulating tumor DNA (ctDNA) and Methylation assay development
- Circulating Tumor Cells (CTC)
- Exosomes or Extracellular Vesicle extraction from Blood for Biomarker Identification.
- Technology to improve sensitivity
- Computational methods for Next-Generation Sequencing

Flow Chemistry

- Multistep synthesis
- Photochemistry, Electrochemistry
- Automation of downstream process (quenching, phase separation, distillation)
- Continuous crystallisation/drying/milling
- In line analysis.
- Continuous manufacturing in Pharma



Georges Da Violante

Director, Search & Evaluation, Enabling Technologies
georges.da-violante@servier.com



Tian Li, PhD

Associate Director, Search & Evaluation, Asia-Pacific
tian.li@servier.com



Artificial Intelligence (AI) & digital technologies applied to R&D

Focusing on a patient-centered use of AI and digital technologies to:

- Enrich our pipeline by either developing first in class new drugs or by repurposing existing drugs.
- Improve treatment effectiveness, reduce adverse effects and enhance patient outcomes
- Accelerate our Drug Discovery & Development processes

Therapeutic modalities

Small molecules, Antisense Oligonucleotides (ASO), Antibodies (mAbs, bispecifics, ADCs).

Main thematic of our data analytics strategy:

Early Research

- Target identification and validation, Hit screening and validation, Drug Design, patient stratification.

Late Research

- Treatment understanding, DMTA cycle optimization, Disease understanding, biomarker identification.

Early Development

- Disease modelling, optimization of clinical trial design, biomarker validation.
- Drug product development & characterisation

Late Development

- Strategy for patient finding and site selection, Optimization of medical authoring, Patient-centric clinical trial execution, Pharmacovigilance processes optimization.

R&D Search & Evaluation



Franck Augé, PhD

Director, Search & Evaluation, AI & digital technologies
franck.auge@servier.com



Tian Li, PhD

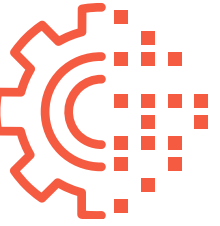
Associate Director, Search & Evaluation, Asia-Pacific
tian.li@servier.com

Global BD Coordination



Delphine Duong

GBD Coordination Officer, Research Transactions & CMVD
delphine.duong@servier.com



Digital, Data, Artificial Intelligence (AI) Opportunities & Beyond-the-Pill solutions

Preferred Digital & AI use cases

Initiatives focusing Pharma operational efficiency & decision-making

- AI Medical, Health Equity and Patient Insights management
- Sales Forecasts, Supply Chain, Manufacturing & Employee optimisation

Examples of solutions supporting HealthCare Professional (HCPs) activities

- HCP Education & omnichannel support (content tagging...)
- Clinical Decision Support Tools and clinical trials platform optimization
- Remote patient monitoring & dashboards

Examples of beyond the pill solutions supporting patients & caregivers

- Solutions supporting adherence (esp. Chronic disease) & quality of life
- Patients journey insights and personalization (esp. Oncology)
- Solutions offering education & gamification possibilities

Preferred modalities

Geographic scope Worldwide (or regional)

Deal types Co-development, licenses, strategic partnerships & beyond

Preferred maturity stage & technical aspects

- Ready to use solutions
- Previous pharma partnerships
- Medical Device (*depending on use case*)
- Clinical benefits targeted



Véronique Frechin

Head of department, Scouting, Partnerships & Strategy
WeHealth Digital Factory

veronique.frechin@servier.com

Scouting Contacts



Fiona Clemente

Scouting Manager

fiona.clemente@servier.com



Gaëlle Nou

Scouting Officer

gaelle.nou@servier.com

Partnerships & Strategy



Grégoire Guillet

Chief Business & Value Officer

grégoire.guillet@servier.com

Assets available for partnering or sale



The following assets have been de-prioritized in our portfolio, and we would welcome a discussion with interested parties:

Asset	Target	Modality	Stage	Therapeutic area
S095043	LILRB1/2	Monoclonal antibody	PCC	Oncology
RHU030	Galectin-3	Monoclonal antibody	Lead optimisation	Immuno-Inflammatory



If interested, please fill in the [on-line form](#) and a member of Global Business Development will respond.

Partnering with

SERVIER



2025