

RESEARCH AND
DEVELOPMENT INSTITUTE

SERVIER PARIS- SACLAY



Accelerating research
today to reinvent the health
of tomorrow

SERVIER 
moved by you



Dr Claude Bertrand

Executive Vice President Research and Development

« Our Servier research and development institute, at the Paris-Saclay hub for scientific and technological innovation, strives for innovation and excellence.

This unique hub for research and development inspires Servier's ambition to provide cutting-edge therapeutic innovations to patients, reflecting our determination to raise the profile of french research internationally.

We are therefore committing to a future-facing project to drive the group's foundation, long-term research and serve our vocation – committed to therapeutic progress to serve patient needs. »

An independent global pharmaceutical group

34th

largest pharmaceutical group
worldwide, 2nd in France,
and 5th leading pharmaceutical
group in cardiology globally

IQVIA, Analytics Link/World 74 countries –
MAT Q3-2023

5.3 Bn

in Group revenue
in 2022/2023

> 20%

of revenue from brand-name
medicines invested in R&D each year

96.5%

of active ingredients used
in Servier brand-name medicines are
produced in France

> 150

countries where Servier Group
medicines are distributed

21,900

employees worldwide on
September 30, 2023







**SACLAY,
A CUTTING EDGE
ENVIRONMENT
FOR INNOVATION**

A unique hub for cross-disciplinary innovation

With our Servier Research and Development Institute in Paris-Saclay, we are taking a new step in our journey to more open, dynamic, and productive research in order to more effectively meet patients' unmet therapeutic needs. Up to 1,500 employees are working together onsite to reinvent health care of tomorrow.

The Paris-Saclay Cluster, a unique hub for research

Ranked one of the eight clusters for innovation worldwide, along with Silicon Valley, Beijing, and Silicon Wadi in Israel, Paris-Saclay has top-tier international influence. The site is home to key names in research as well as international companies, start-ups, and renowned universities such as CentraleSupélec, the École Polytechnique graduate school, the ENS Paris-Saclay graduate school, and Paris-Saclay University —the first French university included in the prestigious Shanghai ranking.

Fostering synergy

Paris-Saclay is the ideal location for establishing new partnerships, representing 15% of French research by number of researchers and 40% of employment in public and private research in the Greater Paris region. By bringing together our research and development activities in one place, we intend to help our teams develop in a high-level environment, where they will benefit from the skills and expertise of other professionals. We are reached out to a number of local institutions such as CNRS or CEA. Riding the momentum underway at Paris-Saclay, we also participate in the organization of a number of events including Paris-Saclay Spring, Orange Campus, TEDxSaclay, the Île de Sciences competition, and the Paris-Saclay University symposium. —

PARIS-SACLAY IN FIGURES

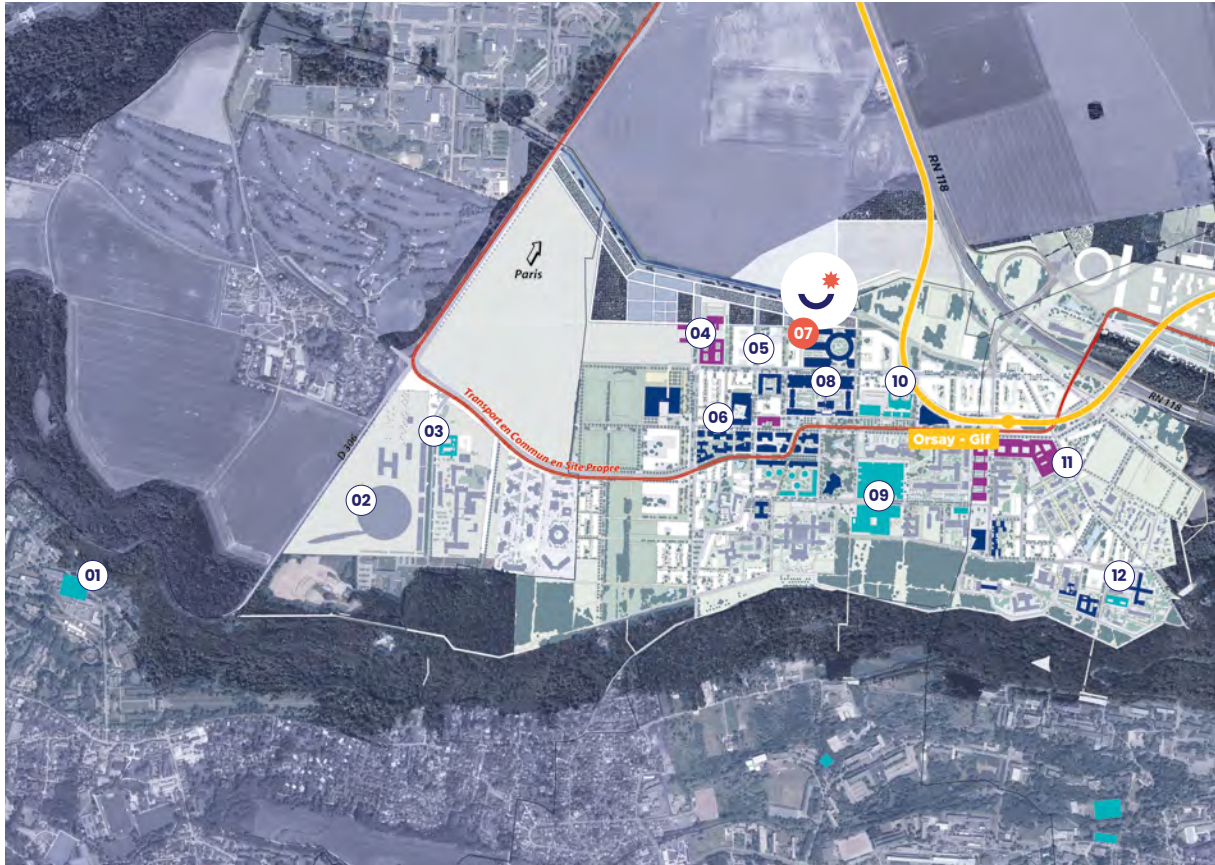
15%
of French research

65,000
students

15,000
researchers

1st
among French universities
in the Shanghai world university
rankings

The Paris-Saclay cluster



THE MOULON DISTRICT

- | | | |
|---|---|---|
| <p>01 The french national center for scientific research (CNRS) institute for integrative biology of the cell</p> | <p>04 Paris-sud university - institute for the diversity, ecology and evolution of the living world (IDEEV)</p> | <p>08 ENS Paris-Saclay graduate school</p> |
| <p>02 Synchrotron SOLEIL</p> | <p>05 Danone</p> | <p>09 CentraleSupélec graduate school</p> |
| <p>03 Installation for the climate and the environment (french alternative energies and atomic energy commission - CEA)</p> | <p>06 Housing, stores, services, public amenities</p> | <p>10 Paris-Sud university it research hub</p> |
| | <p>07 Servier research and development institute Paris-Saclay</p> | <p>11 Paris-Sud university biology, chemistry and pharmacy center</p> |
| | | <p>12 The Orsay molecular science institute (ISMO)</p> |



THE ÉCOLE POLYTECHIQUE DISTRICT

13 EDF Campus

14 EDF R&D LAB

15 Institut Mines-Télécom (IMT) graduate school

16 Sub-Prefecture

17 École polytechnique science & tech graduate school lab

18 Civil aviation radar

● Buildings delivered

● Consultation process completed

● Consultation process underway



Servier Research and Development Institute




The Servier Research and Development Institute in Paris-Saclay, a hub for innovation.

Paris-Saclay



Servier Research and Development Institute



**HELPING
START-UPS STEP
UP INNOVATION
IN HEALTH CARE**



Incubating the start-ups driving therapeutic innovation

The start-up incubator Spartners at the Servier Research and Development Institute is the sole initiative of its kind in France, and represents our ambition to renew ourselves and our approach to R&D.

Synergies fostering therapeutic innovation

Breaking down barriers to network innovation is key to meet the unmet needs of patients more effectively and efficiently. The incubator was therefore designed as a space to share know-how and expertise for the development of health and medicine related projects. Servier leverages its internal network to share its scientific and technological expertise with start-ups, harnessing a network of partners to provide support regarding legal, accounting, and administrative issues. This new synergy between the momentum of new, future-facing companies and our pharmaceutical knowledge therefore creates unique conditions that will showcase and accelerate therapeutic research.

Using tailor-made spaces

Spanning 1,850 m², the incubator houses various types of workstations—featuring laboratories with state-of-the-art equipment alongside

offices specially designed to facilitate discussion, as well as reception and catering areas. We have entrusted the management to BioLabs, a world renowned US-based incubator operator. A dedicated team accompanies the start-ups on a daily basis and oversees the day-to-day management of the site, the provision of services and equipment, practical support, as well as events and programs specially designed for start-ups operating in the life sciences industry.

Specific guidance for growing start-ups

The incubator has been designed with capacity for up to 110 people—i.e., around 15 start-ups, which will be renewed on average every two years. Start-ups that respond to the call for tender will be chosen by a committee made up of representatives from Servier, as well as qualified external participants. To join the incubator, the start-ups must already possess a certain level of maturity and present a proven and promising concept that aligns with Servier's business, as well as a clear vision of what they need to go further. —

THE INCUBATOR SPARTNERS IN FIGURES

110
PERSON
capacity

1,850 m²
across four floors

May
2023
opening

2024
first Spartners Golden Ticket





A building focused on innovation,
kitted out with cutting-edge scientific
and IT equipment.

Paris-Saclay





**ENCOURAGING
COLLABORATION
AND AGILITY**

Fostering an environment conducive to innovation

Featuring innovative architecture and cutting-edge technological capabilities, the Servier Research and Development Institute in Paris-Saclay has been designed to foster new methods of work and management that facilitate synergy and teamwork.

A departmental structure

The building's architecture was created to encourage new working methods by making it easier to disseminate best practices, bring together scientific and technical teams, develop partnerships, and share expertise. Architects Wilmotte & Associés designed the building around a central ring, with all scientific activities taking place in the departments located in the wings. This cross-disciplinary structure will enhance communication and has been planned to step up R&D programs while fostering harmonious collaboration in and between teams, benefiting scientific progress and therapeutic innovation.

Fully digital and technological facilities

Successfully integrating digital technologies is key to boosting agility, performance, and productivity. Combining the most advanced data processing

technology with our teams's expertise enables an acceleration of the iterative molecule identification procedure. What's more, as the cornerstone of the R&D process at our Research and Development Institute, the new cloud computing environments, high performance computing centers, and powerful analysis tools will enhance innovation, fostering future therapeutic success stories.

Flexible spaces

All work spaces were designed with teams upstream. The Research and Development Institute is much more than a building—it illustrates a new way of thinking about how we work. Employees can therefore move freely between individual spaces for high-level concentration and the collective areas for open discussions. They can also enjoy the various relaxation areas located both inside and outside, in the green spaces. This stimulating working environment helps unlock the full potential of research while improving employee well-being. —

THE SERVIER RESEARCH AND DEVELOPMENT INSTITUTE IN FIGURES

UP TO

1,500

employee capacity

45,000 m²

a floorplan spanning

15,000 m²

of laboratories

1 projet

awarded to architectural firm
Wilmotte & Associés



Servier Research and Development Institute



A building designed to facilitate meetings and discussion.

Paris-Saclay





**COMBINING
WELL-BEING AT
WORK AND
ENVIRONMENTAL
PROTECTION**

Taking action to protect the environment and everyone onsite

In line with our corporate social responsibility (CSR) strategy, we are striving to make sure that the Research and Development Institute real estate project underway at Paris-Saclay applies its approach of generating a positive impact for employees, the environment, and stakeholders. The awarding of multiple certifications has proven the extent of this commitment.

High Environmental Quality (HQE) certification

The High Environmental Quality (HQE) certification recognizes and highlights buildings with optimal environmental and energy performance from the design stage. This approach is part of a constant improvement process to encourage people to reduce buildings' energy usage and environmental impact while protecting the health, well-being, and comfort of users.

WELL Building Standard® certification

At the Servier Research and Development Institute in Paris-Saclay, the immediate environment for users is a key consideration in order to ensure

their quality of life at work, which is a key priority for the Group. The WELL Building Standard® certification, awarded by the International WELL Building Institute (IWBI), focuses on people's health and well-being. At the Institute, a number of facilities will be made available to employees to encourage them to eat a healthy and balanced diet, exercise regularly, and improve their work/life balance.

BiodiverCity® label

To encourage everyone to protect and showcase urban biodiversity, we are also aiming for the international BiodiverCity® label. This new assessment attests a certain level of excellence when it comes to ecology and sustainable construction. The Servier Research and Development Institute therefore includes grounds spanning almost 5,000 m², 9,000 m² of green roofs and over 70 plant species. There is also 100 m² of community gardens and specific habitats, such as nesting boxes for local fauna identified through an ecological study. These spaces give site users the opportunity to discover local plant and animal species. —

THE SITE'S GREEN AMBITIONS IN FIGURES

70

plant species

5,000 m²

of green space on the ground

9,000 m²

of green roofs

100 m²

of community gardens



Servier Research and Development Institute



Green spaces improve well-being for people onsite.

Paris-Saclay

SERVIER – APRIL 2024

Headquarters : 50, rue Carnot – 92284 Suresnes Cedex
France
Tel. : 01 55 72 60 00
servier.com

Designed and produced by:
Pelham Media / Studio l'Éclaireur

Photo credits:
Wilmotte & Associés / EPA Paris-Saclay /
Franck Juery / Martin Argyroglo /
Julien Lutt / Arnaud Lombard

SERVIER 
moved by you