

## Contacts

### Global Business Development



#### Frédéric Scaerou, PhD

Global Head,  
Business Development Oncology  
Mobile: +33 6 30 00 14 40

[frederic.scaerou@servier.com](mailto:frederic.scaerou@servier.com)

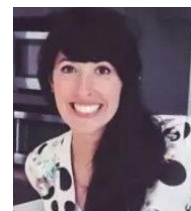


#### Valerie Agrapart, PharmD

Director,  
Business Development Oncology  
Mobile: +33 6 33 32 46 43

[valerie.agrapart@servier.com](mailto:valerie.agrapart@servier.com)

### R&D External Innovation



#### Kelly Marsh, PhD

Global Search & Evaluation,  
Oncology  
Mobile: + 1 412-432-6860

[Kelly.marsh@servier.com](mailto:Kelly.marsh@servier.com)

### Active Oncology Partnerships



## Areas of interest

# Oncology

### Discovery & Early-stage Clinical Focus

- Targeted protein degradation and protein-protein interaction inhibitors
- Small molecule modulators of cell survival, T-cell activation and the tumour microenvironment

#### Cancer cell Targeting

- Apoptosis (BCL2 family; extrinsic cell death)
- Novel oncogenes, oncogene stability regulators
- Epigenetic regulators (with biomarker validation)
- Synthetic lethality associated with genetic defect

#### Immuno-oncology

- Stroma/ Tumor micro-environment (e.g., genetically-driven immune contexture)
- T cell activation (e.g. intracellular immune checkpoints)
- Immunosuppression (e.g., Treg targeting)
- Innate immunity (e.g., Type I interferon pathway)

### Late-stage Clinical Focus

- We are actively looking at strengthening our portfolio and licensing-in/acquiring commercial and late-stage products (on market ~2023/4)
- Solid tumors; priority GI (pancreatic, HCC, gastric, CRC, cholangiocarcinoma)
- Biomarker-selected solid tumor subpopulations (incl. outside of GI)
- Pediatric cancers
- Hematologic tumors in pediatric and selected populations (NHL, ALL, AML)

*Ability to measure single agent pharmacodynamics is mandatory; if single agent efficacy is not anticipated, a rationale for combination is expected*

### Modalities

- Small molecules (Discovery to Early Clinical stage)
- mAb/bispecifics (Early Clinical stage)

### Deal types

- Global or Regional, EU/China/Japan
- In/Out Licensing, Co-Development, Research Collaborations,...

## Partnering with Servier

Partnership is embedded in our culture with highly engaged and diverse teams partnering for a shared purpose - contributing to therapeutic progress to serve patient needs. Our partnership approach serves one goal: to bring life-changing treatments to patients faster. We strive to always put patients first, leading to better outcomes for ourselves and our partners.

## A partner of choice

### A partner with strong commitment

Servier is an independent pharmaceutical company committed to therapeutic progress to serve patient needs. Its unique governance allows Servier to reinvest all its profits to support its development, as well as plan and invest with a long-term view, in line with its vocation. Servier long-term vision applies to its partnership philosophy.

### A partner with a global presence

With €4.7Bn of revenue in 2020 across 150 countries worldwide, the Group has a growing presence in the USA and Japan, a strong EU presence and a deep knowledge of emerging countries and China.

### A partner with proven expertise and experience

Servier is very focused on specialty care oncology with a proven expertise of over 60 years in cardiovascular and metabolic diseases. It is developing new therapeutic solutions to serve unmet patient needs. From R&D to commercialization, we have proven experience to help new therapeutic innovations become reality for patients, alone or with partners

### A partner you can rely on

Servier is proud of what has been achieved with its partners so far. Servier has a strong track record of providing flexible partnership structures to its many partners, as well as an R&D infrastructure with 2,900 people in France, Hungary and Boston and an extensive commercial knowledge of global markets

## Our areas of interest



### Oncology

#### Discovery & Early Clinical Focus

##### Cancer cell Targeting

- Apoptosis (BCL2 family; extrinsic cell death)
- Novel oncogenes, oncogene stability regulators
- Epigenetic regulators (with biomarker validation)
- Synthetic lethality associated with genetic defect

##### Immuno-oncology

- Stroma/ Tumor micro-environment (e.g., genetically-driven immune contexture)
- T cell activation (e.g. intracellular immune checkpoints)
- Immunosuppression (e.g. Treg targeting)
- Innate immunity (e.g. Type I interferon pathway)

##### Modalities

- Small molecules (Discovery to Early Clinical stage)
- mAb/bispecifics (Early Clinical stage)

##### Late stage and commercial opportunities

- We are actively looking at strengthening our portfolio and licensing-in/acquiring commercial and late-stage products (on market ~2023/4)



### Immuno-inflammation

#### Inflammatory & autoimmune disease

- Lupus
- Primary Sjögren syndrome
- Systemic sclerosis
- And other diseases sharing similar pathophysiological mechanisms

##### Modalities

- small molecules
- mAb/bispecifics



### Neuroscience

- Multiple System Atrophy
- Familial Amyotrophic lateral sclerosis
- Hereditary forms of Parkinson's Disease
- Spinocerebellar Ataxia
- Progressive Supranuclear Palsy

##### Modalities

- Small molecules
- ASO
- PROTAC



### Cardiovascular & Metabolism diseases

Acquire or license market-ready or mature assets for some geographies