



## Contacts

### Business Development & Licensing



**Frédéric Scaerou, PhD**

Lead Director Licensing

Mobile: +33 6 30 00 14 40

[frederic.scaerou@servier.com](mailto:frederic.scaerou@servier.com)



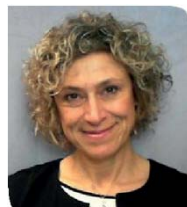
**Valerie Agrapart, PharmD**

Director Licensing

Mobile: +33 6 33 32 46 43

[valerie.agrapart@servier.com](mailto:valerie.agrapart@servier.com)

### Research & Development



**Anna Migliazza, PhD**

Director External Opportunities

Mobile: +33 7 85 49 55 50

[anna.migliazza@servier.com](mailto:anna.migliazza@servier.com)



**Mike Burbridge, PhD**

Program Director External Opportunities

Mobile: +33 6 76 79 15 77

[mike.burbridge@servier.com](mailto:mike.burbridge@servier.com)

## Active Oncology Partnerships



## Areas of interest

### Discovery and Early Clinical Focus

#### *Cancer cell Signaling*

- Apoptosis (BCL2 family; extrinsic cell death)
- Novel oncogenes, oncogene stability regulators
- Epigenetic regulators (with biomarker validation)
- Synthetic lethality associated with genetic defect

#### *Immuno-oncology*

- T cell activation (e.g. intracellular immune checkpoints)
- Immunosuppression (e.g., Treg targeting)
- Innate immunity (e.g., Type I interferon pathway)
- Tumor micro-environment (e.g., genetically-driven immune contexture)

### Modalities:

- Small molecules (incl. PPI & TPD; all stages)
- mAb (for IND-ready / early clinical assets)

### Late Stage Opportunities Focus

- We are actively looking at strengthening our commercial stage portfolio and licensing-in/acquiring commercial and late-stage products (on market ~2021)

### Indications

- Solid tumors; priority GI (CRC, HCC, pancreas, gastric, esophageal, cholangiocarcinoma)
- Other indications would be considered if biomarker-selected populations exist
- Pediatric cancers
- Hematologic cancers (in particular NHL, ALL and AML)

*Ability to measure single agent pharmacodynamics is mandatory; if single agent efficacy is not anticipated, a rationale for combination is expected*

### Key Areas for Collaborations and Licenses

- Targeted protein degradation and protein-protein interaction inhibitors
- Small molecule modulators of cell survival, T-cell activation and the tumour microenvironment
- Synthetic lethality associated with genetic defect

## Partnering with Servier

Partnership is embedded in our culture with highly engaged and diverse teams partnering for a shared purpose — contributing to therapeutic progress to serve patient needs. Our partnership approach serves one goal: to bring life-changing treatments to patients faster. We strive to always put patients first, leading to better outcomes for ourselves and our partners.

## A PARTNER OF CHOICE

### A partner with strong commitment

Servier is an independent pharmaceutical company committed to therapeutic progress to serve patient needs. Its unique governance allows Servier to reinvest all its profits to support its development, as well as plan and invest with a long-term view, in line with its vocation. Servier long-term vision applies to its partnership philosophy.

### A partner with a global presence

With €4.6Bn of revenue in 2018/2019 across 150 countries worldwide, the Group has a growing presence in the USA and Japan, a strong EU presence and a deep knowledge of emerging countries and China.

### A partner with proven expertise and experience

Servier is very focused on specialty care oncology with a proven expertise of over 60 years in cardiovascular and metabolic diseases. It is developing new therapeutic solutions to serve unmet patient needs. From R&D to commercialization, we have proven experience to help new therapeutic innovations become reality for patients, alone or with partners

### A partner you can rely on

Servier is proud of what has been achieved with its partners so far. Servier has a strong track record of providing flexible partnership structures to its many partners, as well as an R&D infrastructure with 2,900 people in France, Hungary and Boston and an extensive commercial knowledge of global markets

## Our areas of interest



### Cardiovascular diseases

- Heart failure (acute and chronic HF)
- Atrial fibrillation
- Systemic hypertension
- Coronary artery disease
- Arrhythmic Cardiomyopathies
- Hyperlipidemia
- Venous diseases



### Metabolism

- Type 2 Diabetes
- NASH
- Diabetic Kidney Diseases
- Clinical & Marketing Stage:
  - Diabetic retinopathy
  - Non-injectable Insulins



### Oncology

#### Late stage opportunities

Solid tumors; priority GI (CRC, HCC, pancreas, gastric, esophageal, cholangiocarcinoma)  
Other indications would be considered if biomarker-selected populations exist  
Pediatric cancers  
Hematologic cancers (in particular NHL, ALL and AML)

#### Discovery & Early Clinical Focus

##### Cancer cell Signaling

- Apoptosis (BCL2 family; extrinsic cell death)
- Novel oncogenes, oncogene stability regulators
- Epigenetic regulators (with biomarker validation)
- Synthetic lethality associated with genetic defect

##### Immuno-oncology

- T cell activation
- Immunosuppression
- Innate immunity
- Tumor micro-environment



### Immuno-inflammatory diseases

#### Inflammatory & autoimmune disease

- Lupus
- Primary Sjögren syndrome
- Systemic sclerosis



### Central Nervous System

- Parkinson's disease
- Autism
- Alzheimer's disease
- ALS
- Huntington disease
- Other rare disease in neurodevelopmental and neurodegenerative disorders



### Enabling technologies

- Solutions to improve solubility
- Oral administration of peptides
- Blood-brain barrier penetration systems
- Nose-to-brain delivery solutions
- Cardiac drug delivery
- Micro-needle
- Acid nucleic delivery
- Galenic micro-electronics
- Innovative polymer for improved drug delivery